

**SALE / LEASE**  
INQUIRE FOR PRICING

**5,000 SF / 7,000 SF / 12,000 SF COMMERCIAL CONDOS**

5908 & 5909 Enterprise Ct, Frederick, MD 21703



*All information contained herein is deemed reliable, but not guaranteed.*



**Seamus Fitzgerald**

Executive Vice President

301-787-4050

seamus@frg.us

www.frg.us

**Meagan Fitzgerald Romero**

Senior Associate, Sales & Leasing

301-755-3818

meagan@frg.us

www.frg.us

"Quality Real Estate Since 1976"

Fitzgerald Realty Group, Inc. | 8 E 2nd Street, Suite 101 | Frederick, MD 21701 | (301) 698-1080

**SALE / LEASE**  
INQUIRE FOR PRICING

# 5,000 SF / 7,000 SF / 12,000 SF COMMERCIAL CONDOS

5908 & 5909 Enterprise Ct, Frederick, MD 21703



**5908 ENTERPRISE CT**



**5909 ENTERPRISE CT**

## QUICK FACTS

AVAILABILITY	5,000 SF / 7,000 SF / 12,000 SF
SPACE TYPE	Commercial Condos
ZONING	GC (General Commercial, Frederick County)
LOADING	Drive-In Doors
DATE AVAILABLE	Immediately



Currently used as a paint and body shop



Excellent Zoning allows for a wide variety of commercial uses



5909 features fenced-in rear yard



Will sell individually


Fitzgerald Realty Group, Inc. ("FRG"), as exclusive representative of the owner, is pleased to offer the opportunity to purchase one or two commercial condos in a growing area of Frederick. Located just off MD Rt 180 and convenient to I-70/I-270/Rt. 15, the units are currently used as paint and body shop. The existing paint/body equipment is available if desired.

*All information contained herein is deemed reliable, but not guaranteed.*



**Seamus Fitzgerald**

Executive Vice President

 301-787-4050

 [seamus@frg.us](mailto:seamus@frg.us)

 [www.frg.us](http://www.frg.us)

**Meagan Fitzgerald Romero**

Senior Associate, Sales & Leasing

 301-755-3818

 [meagan@frg.us](mailto:meagan@frg.us)

 [www.frg.us](http://www.frg.us)

**SALE / LEASE**  
INQUIRE FOR PRICING

**5,000 SF / 7,000 SF / 12,000 SF COMMERCIAL CONDOS**

5908 & 5909 Enterprise Ct, Frederick, MD 21703



## Popular Permitted Uses in GC Zoning

- |                                    |                               |                           |
|------------------------------------|-------------------------------|---------------------------|
| Warehouse/Wholesaling              | Mobile Home Sales             | Household Furnishings     |
| Fence Contractor                   | Paint Store                   | Animal Hospital           |
| Pool Contractor                    | Office equipment              | Vet Clinic                |
| Siding Contractor                  | Pet Store                     | Health Club               |
| Landscape Contractor               | Pet Care/Grooming             | Fitness Center            |
| Carpentry Shop                     | Liquor Store                  | Child Care/Nursery School |
| Electrical Shop                    | Restaurant                    | Place of Worship          |
| Plumbing Shop                      | Night Club                    | Kennel                    |
| Welding Shop                       | Tavern                        |                           |
| Printing Shop                      | Lounge                        |                           |
| Upholstery Shop                    | Dance/Music Studio            |                           |
| Commercial Nursery                 | Office Uses                   |                           |
| Lumber Yard                        | Laboratory/Research           |                           |
| Indoor Sports/ Recreation Facility | Auto Sales, Repair or Service |                           |

*All information contained herein is deemed reliable, but not guaranteed.*



**Seamus Fitzgerald**

Executive Vice President

301-787-4050

seamus@frg.us

www.frg.us

**Meagan Fitzgerald Romero**

Senior Associate, Sales & Leasing

301-755-3818

meagan@frg.us

www.frg.us

"Quality Real Estate Since 1976"

Fitzgerald Realty Group, Inc. | 8 E 2nd Street, Suite 101 | Frederick, MD 21701 | (301) 698-1080

# 5908 PHOTOS

## 5,000 SF / 7,000 SF / 12,000 SF COMMERCIAL CONDOS

5908 & 5909 Enterprise Ct, Frederick, MD 21703



All information contained herein is deemed reliable, but not guaranteed.



**Seamus Fitzgerald**

Executive Vice President

301-787-4050

seamus@frg.us

www.frg.us

**Meagan Fitzgerald Romero**

Senior Associate, Sales & Leasing

301-755-3818

meagan@frg.us

www.frg.us

# 5909 PHOTOS

## 5,000 SF / 7,000 SF / 12,000 SF COMMERCIAL CONDOS

5908 & 5909 Enterprise Ct, Frederick, MD 21703



All information contained herein is deemed reliable, but not guaranteed.



**Seamus Fitzgerald**

Executive Vice President

301-787-4050

seamus@frg.us

www.frg.us

**Meagan Fitzgerald Romero**

Senior Associate, Sales & Leasing

301-755-3818

meagan@frg.us

www.frg.us

# 5908 FLOOR PLAN

## 5,000 SF / 7,000 SF / 12,000 SF COMMERCIAL CONDOS

5908 & 5909 Enterprise Ct, Frederick, MD 21703



All information contained herein is deemed reliable, but not guaranteed.



**Seamus Fitzgerald**

Executive Vice President

301-787-4050

seamus@frg.us

www.frg.us

**Meagan Fitzgerald Romero**

Senior Associate, Sales & Leasing

301-755-3818

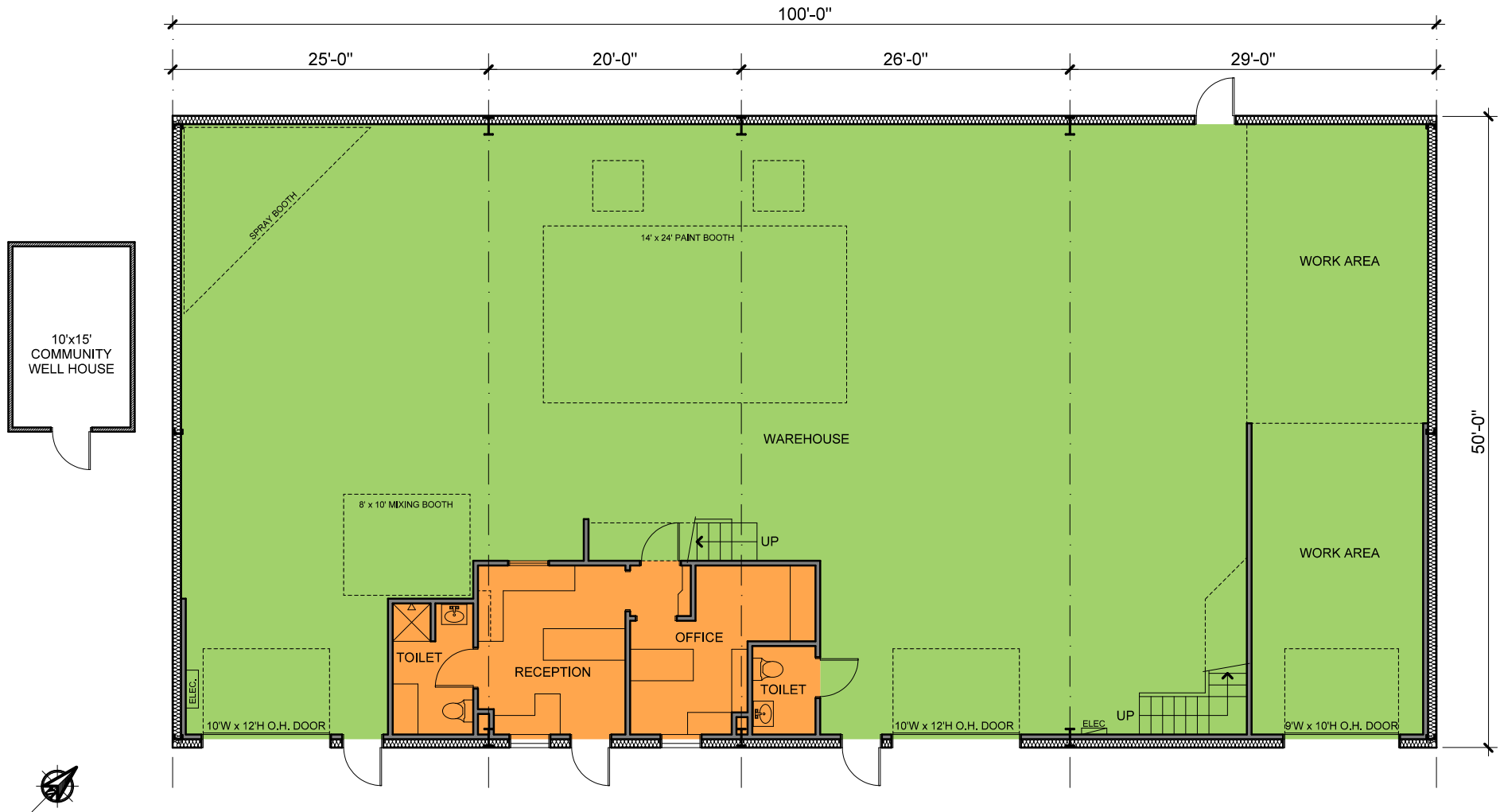
meagan@frg.us

www.frg.us

# 5909 FLOOR PLAN

## 5,000 SF / 7,000 SF / 12,000 SF COMMERCIAL CONDOS

5908 & 5909 Enterprise Ct, Frederick, MD 21703



All information contained herein is deemed reliable, but not guaranteed.



**Seamus Fitzgerald**

Executive Vice President

301-787-4050

seamus@frg.us

www.frg.us

**Meagan Fitzgerald Romero**

Senior Associate, Sales & Leasing

301-755-3818

meagan@frg.us

www.frg.us

# AERIAL MAP

## 5,000 SF / 7,000 SF / 12,000 SF COMMERCIAL CONDOS

5908 & 5909 Enterprise Ct, Frederick, MD 21703



**Seamus Fitzgerald**

Executive Vice President

301-787-4050

seamus@frg.us

www.frg.us

**Meagan Fitzgerald Romero**

Senior Associate, Sales & Leasing

301-755-3818

meagan@frg.us

www.frg.us